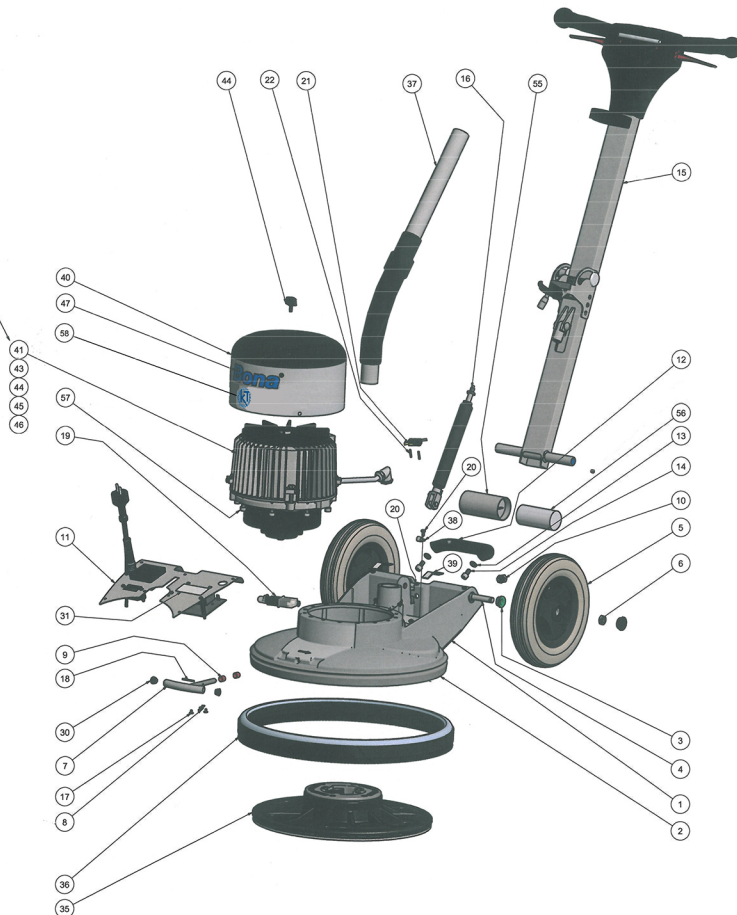


Mounting of motor cables see page 2



Parts List			
ITEM	QTY	DESCRIPTION	PART NUMBER
1	1	FlexiSand freetacke grey base	ASO311001.3
2	1	FlexiSand rubber bumper	ASO311002
3	2	Flange bearing 2002 -JT 4x10	ASO946425
4	1	Handle axle	ASO311004
5	2	Wheel R250-50-2-E-S-K	ASO945390
6	2	Nut M6xM12 galvanized	ASO960070
7	1	Carry handle	ASO311016
8	1	Torsion spring N37029	ASO311018
9	3	Tuffon bushing 1072x10 B	ASO946810
10	1	Breaking protection M12x1,5	ASO903992
11	1	Starting equipment 1900W 230V/50Hz	BM3199340020
12	1	Black lifting handle	ASO945129
13	2	Washer 8 x4x16x1,6 UNH6592 galvaniz.	3292203009
14	2	Screw Hex socket end M8x16 galvan.	ASO952516
15	1	Complete folding handle	ASO316500
16	1	Gas spring FlexiSand	ASO318101
17	2	Screw low head M4x8 galvanized	ASO958009
18	1	Cylinder pin 3 M8 x32 Ht	ASO935332
19	1	HSA ther switch-Circuit 4-wire-Hall 3A	ASO940056
20	11	Screw Torx MRT-TT M5x10 DIN7500G G.	ASO967913
21	1	Micro switch handle tilting	ASO903888
22	2	Spring pin FRP 3x18	ASO936118
30	2	Black cover plug 1813-8	ASO929686
31	1	Thermo label 70x35mm silver	ASO996102
35	1	Pad driver disc 16"	ASO312501
36	1	Grinding plate sealing brush	ASO312102
37	1	Complete suction pipe	ASO316600
38	1	Cable fixing clip	ASO945740
39	2	Clamp for capacitor	ASO311010
40	1	Motor cover FR painted	ASO315175
41	1	Motor 1.9 KW 230V/50Hz without cover	3500030020
42	4	Screw TORX M5x12 DIN7965 galvanizad	ASO967913
43	1	Nut for extra weight	ASO315102
44	1	Wing screw M6x15	ASO845163
45	1	Breaking protection M20x1,5 90°	ASO903995
46	1	Locking ring nut EMUM M20x1,5	ASO903994
47	1	Label Bona	ASO996411
55	1	Start capacitor 145 µF	460030119
56	1	Run capacitor 50 µF	460030121
57	8	Screw 21H"	5001130909
58	1	Round KT label d.40	5100031299

**ЦИКЛЕВОЧНАЯ
КОМПАНИЯ**
WWW.1PARKET.RU +7 (495) 545-25-85

On all serial English gilder Machine Check instructions related the following equipment:	Design number System Serial equipment	Validated for part 0.3 Checked for compliance for part 0.3	Drawings Manufacturer and Drawing Number	Date 13.04.2013
Model:	N Available	Checked by:	Prepared by:	KT Technical Department
FlexiSand 1900W 230V/50Hz		Drawing No:		Sheet:
AMO310002		1		1 / 2



ASO315860
MOTOR 1900W 230V/50Hz COMPLETE + MOTORCOVER

Length of all cables = 430 mm

Cables jacket length 145 mm

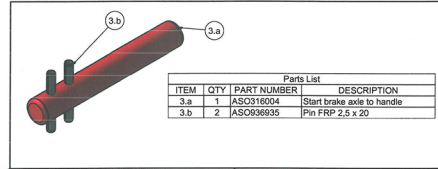
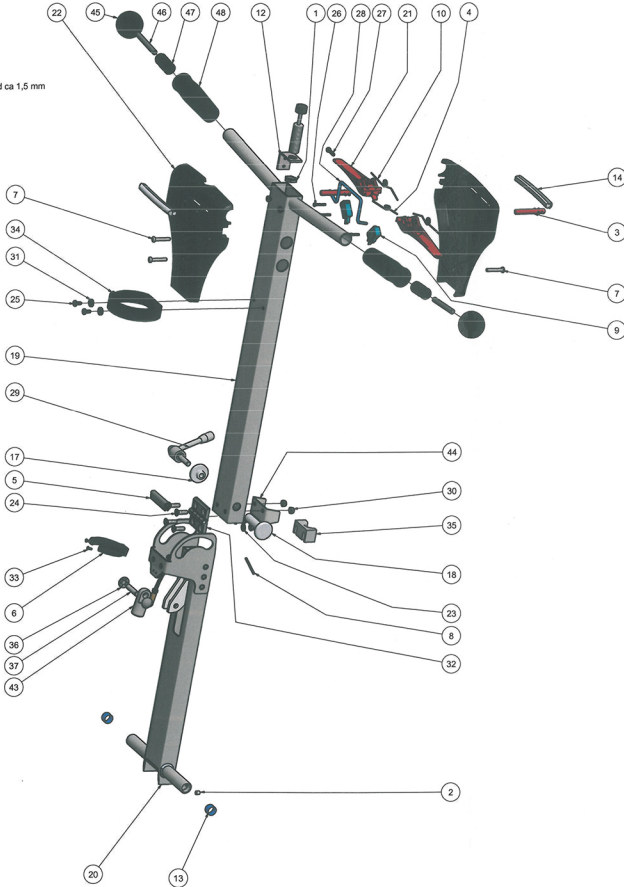


**ЦИКЛЕВОЧНАЯ
КОМПАНИЯ**

WWW.1PARKET.RU +7 (495) 545-25-85

<small>Only as stated except as follows: Unless otherwise stated the following applies:</small>		<small>Shank length System Drauf alpine trocken</small>	<small>130mm for pin 8.3 Surface roughness Ra pin 8.3</small>	<small>General dimension acc. to ISO 2768-mS General dimension acc. to ISO 2768-mS</small>	<small>Drawing - acc. to ISO 9001:2008 Welding - acc. to ISO 9001:2008</small>
<small>Material</small>	<small>Availability</small>	<small>Availability</small>	<small>Productivity</small>	<small>Product</small>	<small>Date</small>
	N Available			KT Technical Department	13-04-2015
				FlexiSand 1900W 230V/50Hz	
				AM0310002	1 / 2 / 2

corners chamfered ca 1.5 mm



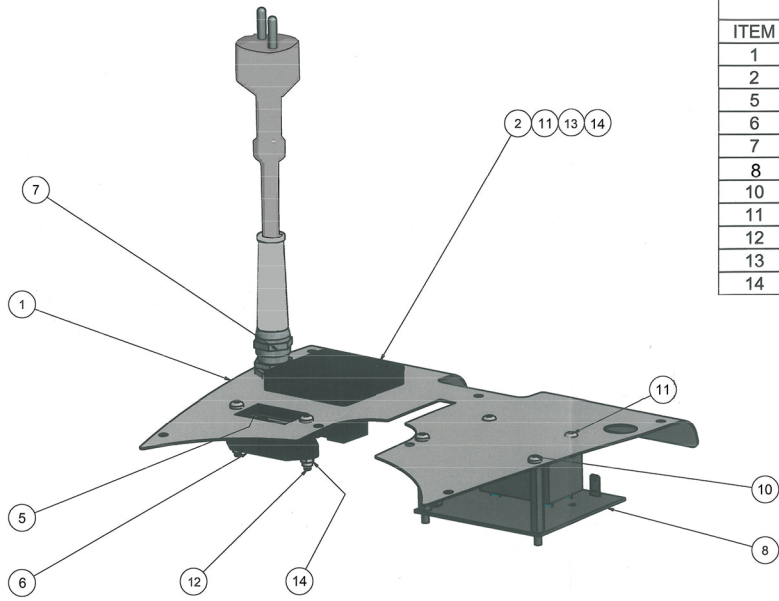
Parts List			
ITEM	QTY	PART NUMBER	DESCRIPTION
3.a	1	ASO316004	Start brake axle to handle
3.b	2	ASO936935	Pin FRP 2.5 x 20

Parts List			
ITEM	QTY	DESCRIPTION	PART NUMBER
1	1	Locking nut M16x1.5 steel	Incl in Post 43
2	1	Grub screw M3SS 6/8	ASO656412
3	2	Compl button against accid starting	ASO316504
4	1	Spring SF-VFR 1.5 x 7 x 6 right	ASO942112
5	0.5	Rubber strip 10 mm	ASO928033
6	1	Pipe hooking spring VHA 51-60	ASO945566
7	4	Screw Eigt DELTA PT K50x30 WN5452	ASO957953
8	1	Spring pin FRP 3 x 35	ASO936135
9	2	Micro switch DVV-1H-C5	ASO933869
10	2	Spring SF-VFR 1.20x3,75 left	ASO942305
12	1	Handle release button support	ASO316017
13	2	Teflon bushing 14/16x10 B	ASO948814
14	2	Guard rubber	ASO316005
17	1	Tension washer to lead bolt	ASO316014
18	1	Tension bolt to handle	ASO316016
19	1	Handle upper frame	ASO316001
20	1	Handle lower frame	ASO316002
21	2	Handle level	ASO316012
22	2	Handle cover	ASO316011
23	2	Washer 6.4x12.5 UN1692 galvanized	580230003
24	4	Screw MFT TORX T30 M6x20 galvanized	ASO958352
25	8	Screw Torx MRT-T1 M5x10 DIN7500C	ASO957913
26	4	Screw Eigt PT K30x20 WN1452	ASO957932
27	2	Screw Eigt PT K40x20 WN1452	ASO957942
28	1	Start levers locking bracket	ASO311006
29	1	Handle adjustment lever	ASO945172
30	4	Nut M6 low self-locking DIN85	580193001
31	2	Plastic washer 007-2050	ASO929057
32	1	Black rope 50mm Eht-48-SV5-50	ASO939050
33	2	Screw TORX countersunk head M3x8	ASO968120
34	1	Velcro 400x20mm	ASO316020
35	1	Cable and frame guard little block	ASO316010
36	2	Lock washer LB-B 8x19x0.25B	ASO987300
37	1	Cylinder pin 8X38	ASO935535
41	1,5	Connection cable 2x0,75	ASO982029
43	1	Hydraulic release	ASO316102
44	1	Hinge support bracket	ASO316025
45	2	Handle machined knob Ø45	ASO316026
46	2	Threaded bar M10x10 galvanized	ASO926108
47	2	Expander for handle	ASO945582
48	1	Handle bar grips pair	ASO945580



**ЦИКЛЕВОЧНАЯ
КОМПАНИЯ**
WWW.1PARKET.RU +7 (495) 545-25-85

Dim. e-mail: asopark@yandex.ru 120000, Moscow, Russia, Leninsky Prospekt, 100	Phone: +7 (495) 545-25-85 E-mail: asopark@yandex.ru	199070, St. Petersburg, Russia, Bolshaya Morskaya Street, 100	Phone: +7 (812) 400-0000 E-mail: asopark@yandex.ru	125080, Moscow, Russia, Leninsky Prospekt, 100	Phone: +7 (495) 545-25-85 E-mail: asopark@yandex.ru
Model: ASO316500		Material: N.Avalable		Date: 13-04-2015	
Description: Complete folding handle		Drawing: ASO316500		Page: 1 of 1	



Parts List			
ITEM	QTY	DESCRIPTION	PART NUMBER
1	1	Starting equipment plate 230/50Hz	3100030502
2	1	El. socket 230V 2+1 pol	ASO903236
5	1	Rubber gasket for hour counter	ASO115173
6	1	Hour meter (counter) CP-0009	ASO903888
7	1	Complete cable	2600030030
8	1	Printed circuit board Flexi 2015	3100030500
10	2	Screw TORX MRT 4x6 DIN7985 galvan.	ASO957812
11	6	Screw TORX MRT M4x12 DIN7985 galv.	ASO957807
12	2	Screw TORX MRT M4x30 DIN7985 galv.	ASO957810
13	4	Washer \varnothing 4 galvanized	5802230001
14	8	Nut M4 self-locking galvaniz.DIN982	5801933004

Entry of floor AB. It may req. without our explicit consent, be utilized.
 by no another part.



**ЦИКЛЕВОЧНАЯ
КОМПАНИЯ**
 WWW.1PARKET.RU +7 (495) 545-25-85

Edition	2	Upgrade	Changed part item 1		Approved by	KT Technical Department	Date	18-05-2015
Unless otherwise stated the following applies				Sharp edges broken	Surface roughness Ra μ m 6.3	General tolerances acc. to SS-ISO 2768-m Welding - acc. to SS-EN ISO 15920		
Material	Designed by		N.Avitable	Checked by	Approved by	KT Technical Department	Date	13-04-2015
Description						Starting equipment 1900W 230V/50Hz		
Drawing no						BOM3199940020	Edition	2
						Sheet		
						1 / 1		